

Pearl[®] Micro 316L

Powder for Additive Manufacturing



CHEMICAL COMPOSITION

Elements	Fe	Cr	Ni	Mo	Mn	Si	P	S	C	O	N
Min	Bal	16	12	2							
Max		18	14	3	2	0.75	0.045	0.03	0.03	0.04	0.1

STANDARDS

- European standards
 - X2CrNiMo17-12-2
 - 1.4404
- US Standards
 - UNS S31603

PARTICLE SIZE DISTRIBUTIONS

- Laser Beam Melting (powder bed): 15-63 μm
- Electron Beam Melting (powder bed): 45-106 μm
- Directed energy deposition (LMD): 45-106 μm
- Customized particle size distributions upon request

CHARACTERISTICS

Austenitic stainless steel produced by gas atomisation using ESH technology:

- Good overall corrosion resistant properties
- Excellent toughness even to cryogenic temperatures
- Non-magnetic

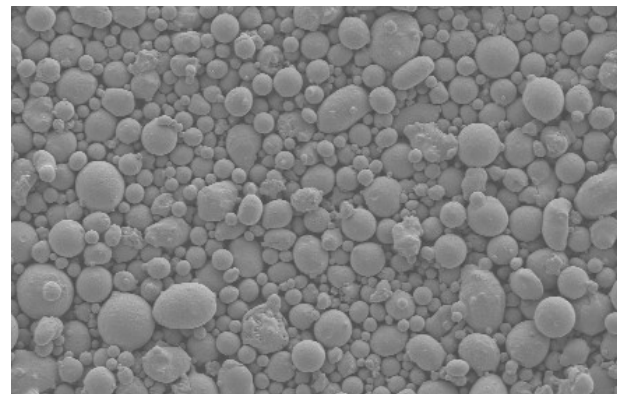
QUALITY CERTIFICATES

- ISO 9001 accreditation
- Certified material test report according to EN 10 204/3.1

DENSITY FOR LBM

Apparent density	4.1 g/cm ³ \pm 0.2
Tap density	5.0 g/cm ³ \pm 0.2

POWDER MORPHOLOGY



Contact: powder@eramet.com
www.aubertduval.com